



## Lakes Estate Newsletter

### Spring 2026

Welcome to the latest newsletter for Lakes Estate residents.

This edition includes news on:

- the first phase of new homes
- new Warren Park
- new community facilities
- securing Serpentine Court

# New Homes on the Lakes Estate

Milton Keynes City Council has now successfully completed Phase A of the Lakes Estate development by building 183 new homes on the Lakes Estate. Many families have now moved in and are very happy with their new homes. This achievement reflects the Council's dedication to tackling local housing needs through a combination of new-build developments and the acquisition of new homes from the open market.



## Lakes Estate Renewal Forum (LERF)

LERF continue to run their events and activities for all residents of the Lakes Estate. For more information including times, dates and venues/locations of meetings, events and activities please contact

**Mariee Wymer: [marieewymer@aol.com](mailto:marieewymer@aol.com)**



## Spotlight turns to new Community Facilities on the Lakes Estate

Change can be difficult, especially when it means saying goodbye to a building that has been part of community life for many years. The closure of Spotlight Community Centre marks the end of an era, but it also opens the door to a hopeful future focused on health, connection, and modern community needs.

For decades, the centre hosted meetings, activities, celebrations, and everyday moments that brought people together. As part of the regeneration of the Lakes Estate, particularly Serpentine Court, the centre is now permanently closed and will be replaced by a new community café and health centre designed around wellbeing, accessibility, and inclusion.

At the heart of the development will be a welcoming café—a space for residents to meet, build friendships, and reduce isolation. Alongside it, the health centre will provide accessible services in a familiar, non-clinical setting, supporting physical, mental, and social wellbeing through care services, workshops, and community activities. Designed with step-free access, energy efficiency, and flexible spaces, the new facilities will serve people of all ages and abilities.

While the closure brings nostalgia, this transition represents renewal—creating more opportunities for connection, support, and a stronger, healthier community.



### Missed the last post!

Please also note that the post box previously located within the shops/precinct area has now been removed by Royal Mail.

Residents can still access nearby post boxes at Laidon Close and Rydal Way, both within walking distance.

### Repairs and Maintenance

If you have any damp or mould issues in your council property, please report it to MEARS using the contact details below. To report your repair and maintenance issues please use one of the following:

- Telephone MEARS on 0330 123 2522, this is answered 24 hours a day, 7 days a week.
- Email: [repairs.miltonkeynes@mearsgroup.co.uk](mailto:repairs.miltonkeynes@mearsgroup.co.uk)

If you live in one of the new Milton Keynes City Council homes on the Lakes Estate including the following: **Kielder Gardens, Padern Place, Morar Close, Pitsford Walk or Burnmoor Close**, please **report your defects and repairs** to the Housing Strategy Team:

Email: [housing.strategy@Milton-keynes.gov.uk](mailto:housing.strategy@Milton-keynes.gov.uk) or call: 01908 252033

Where possible, and relevant, please send photographs so issues can be dealt with more quickly.



If you have any other housing related issues, your neighbourhood officers are here to help. Please call or email them on:

- **Debbie Pilla** Tel: 07483 938394 or email: [debbie.pilla@milton-keynes.gov.uk](mailto:debbie.pilla@milton-keynes.gov.uk)
- **Rachel Harding** Tel: 07785 474093 or email [rachel.harding@milton-keynes.gov.uk](mailto:rachel.harding@milton-keynes.gov.uk)

Please note MKCC officers carry their ID with them at all times, please ask to see ID before letting them in, if you are still not sure please call MKCC on 01908 691 691

Any queries regarding this newsletter please email the Regeneration Team on:

[regeneration@milton-keynes.gov.uk](mailto:regeneration@milton-keynes.gov.uk)

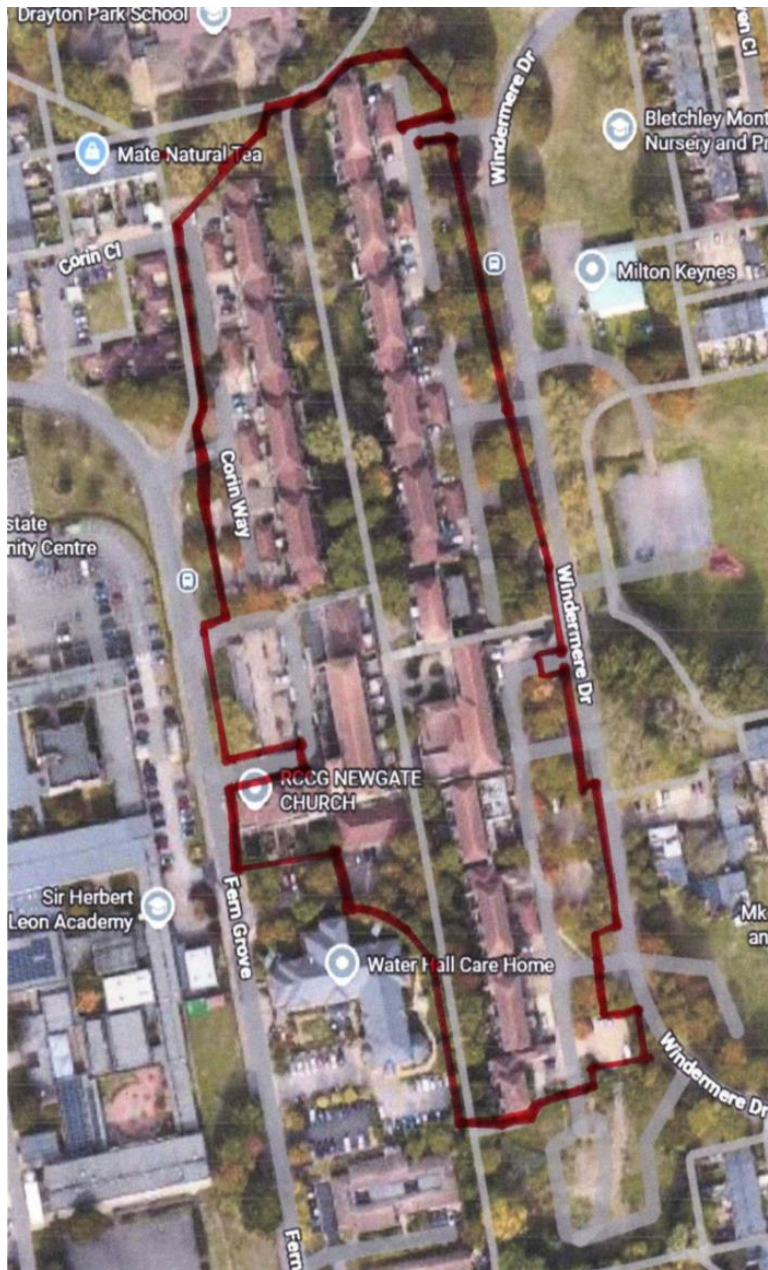
## Securing Serpentine Court

The perimeter surrounding Serpentine Court, Lakes Estate will be hoarded off as part of the planned regeneration works. The red line indicates the approximate location of where the hoarding will be positioned. The work is due to begin at the end of May/early June with a proposed date of completion by end of June 2026.

The hoarding is intended to ensure safety during the upcoming activity/demolition of Serpentine Court and will restrict access immediately around the buildings. The closure/hoarding will also have the following restrictions:

- The main path through the centre of Serpentine Court will be closed and not accessible
- There will no longer be access from Windermere Drive to Fern Grove through the middle of Serpentine Court
- The Redway will be closed

However, residents, pedestrians, and road users are being reassured that all surrounding access routes and public pathways will remain open throughout the period. Alternative routes are not required, as movement around the site will continue. However, please plan accordingly as it will take longer to walk around Serpentine Court due to the hoarding. Please note that emergency access will be maintained at all times, and efforts are being made to minimise any inconvenience during the closure.



## New Warren Park now open!!

The new Warren Park has now been fully installed and was recently used as part of the Easter celebrations organised and delivered by the Lakes Estate Renewal Forum (LERF). Feedback from LERF has been very positive, with the new park described as a welcome and valuable addition to the local area. It provides a well-designed, accessible, and attractive space for the community. The park features a range of new facilities, including a Multi-Use Games Area, a green gym, a pump track for bikes and scooters, and a variety of new play equipment suitable for all ages to enjoy.

